

Village Green

AT THE LAKE

PRIVATE WOODED BACKYARD • SCREENED PORCH WITH MOUNTAIN VIEWS

Visit Our Open House – Friday, Saturday and Sunday 1-5 PM



11 JEFFERSON COURT • WAYNESBORO, VA 22980 • MLS# 45886 • \$349,000
1,564 sq ft 1st level • 650 sq ft 2nd level • 310 sq ft unfinished (bonus room)
3 Bedrooms • 2 Baths • Side-entry 2-car garage • 1.5 Stories

New construction all-brick home with private wooded backyard. Main level Master Bedroom and Laundry room. Two-sided gas fireplace. Cherry cabinets in kitchen with a beautiful granite counter tops, stainless steel appliances and work desk/nook. Screened porch with gorgeous mountain views. Located in community with a small lake and walking trails. Grass-cutting and snow removal provided by Home Owners' Association. Easy access to country club, award-winning AMC hospital, fitness center and new Target and Kohl's. Only 25 minutes to Charlottesville. DIRECTIONS: I-64 to Exit 94. North on Rt. 340. Quick left on Lew Dewitt. Left on Rt. 250 and Left on Goose Creek Road. Village Green entrance 1/4 mile on Left.

Beautiful Mountain Views • Walking Trails • Grass Cutting & Snow removal by HOA • Less than 5 miles to I-81 & I-64

BUILT BY

Westhills Co.
BUILDERS
540-942-5857

Homes Designed, Built and Crafted with Pride
by Westhills Co., the Shenandoah Valley's
Premier Homebuilder Since 1970.

www.WesthillsCo.com



Enjoy beautiful mountain views from screened porch.



Gorgeous Kitchen – Cherry cabinets



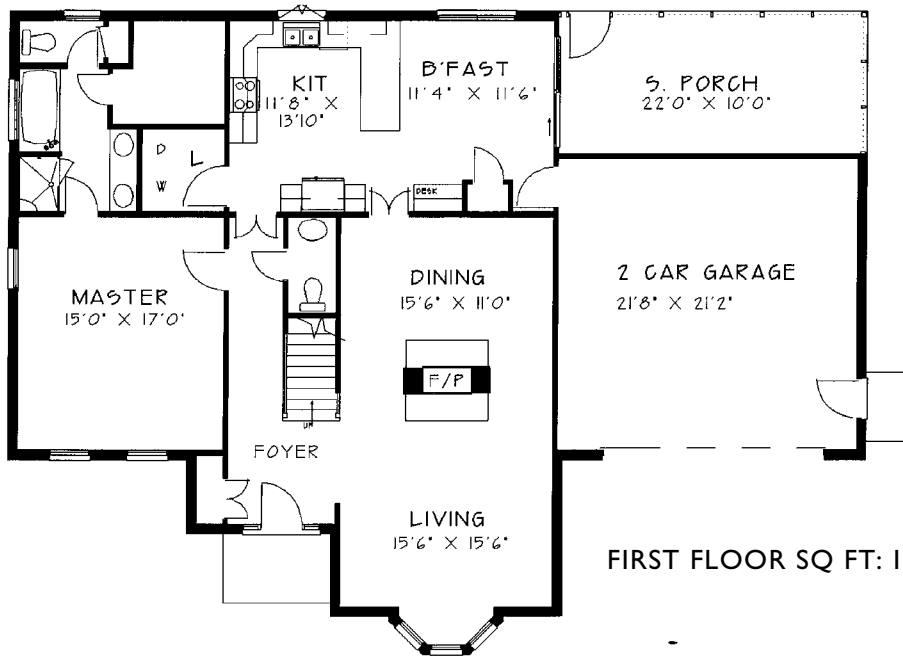
Bright, Spacious Bathrooms



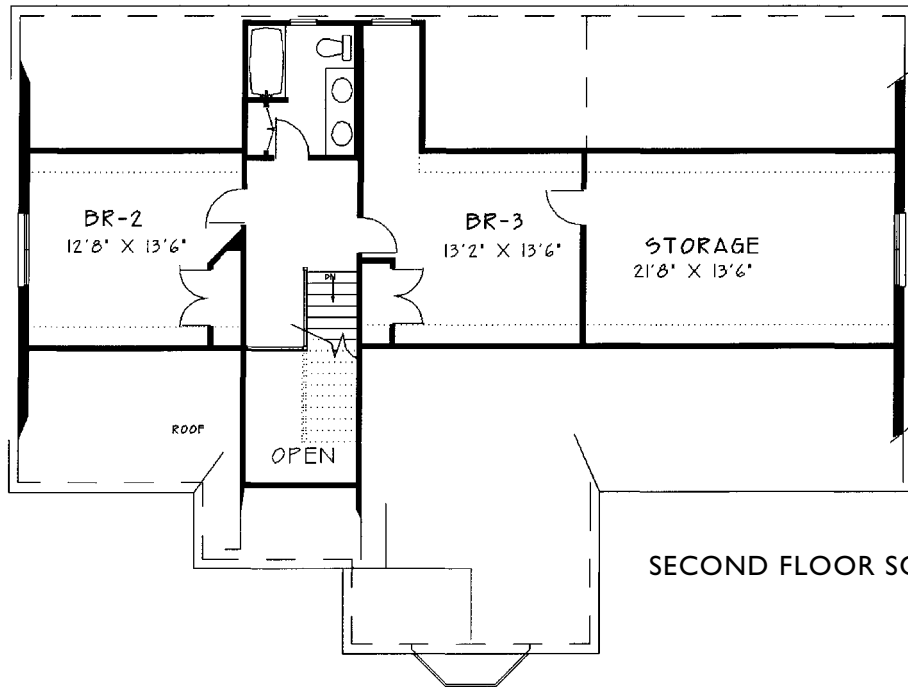
Dining area off Kitchen next to porch



Two-sided Fireplace b/w Dining Room and Living Room



FIRST FLOOR SQ FT: 1,564



SECOND FLOOR SQ FT: 650

PROPERTY ADDRESS 11 JEFFERSON COURT • WAYNESBORO, VIRGINIA 22980 • MLS# 45886

VILLAGE GREEN AT THE LAKE

Village Green at the Lake is a premier residential community of easy-living, high quality homes built by the Shenandoah Valley's most respected homebuilder, Westhills Co. of Waynesboro. Since 1970, Westhills Co. has been recognized for outstanding, architecturally-designed homes and communities.

www.WesthillsCo.com



Information is deemed reliable, but not guaranteed. Plans subject to change without notice.

